

*The
Sir Winston Churchill*





The Sir Winston Churchill

The Sir Winston Churchill is a 3-masted schooner, designed in classic topsail style and created to respond to the challenge of entering a British-built competitor in the Tall Ships race. From her launch in 1966 until 2000, the ship was used for sailing training, carrying up to 46 trainees and instructors, and won numerous racing prizes.

She has been entirely refitted and converted for luxury cruising, strictly retaining her original beautiful lines and seaworthy nature, and now accommodates up to 12 guests in 6 luxurious staterooms.





On Deck

The huge deck space, composed of thick teak planks, includes a bimini-sheltered area on the foredeck for open-air cocktails and dining, while the entire deck forward of the bridge is available for sunbathing.





Salon

The salon comprises a formal dining room, a comfortable lounge area and a separate coffee and games corner. All interior spaces, with beautifully inlaid teak and ash floor, are finished in mahogany and wild cherry, with watercolours and pastel furnishings that combine to evoke the elegant ambience of the 1930s. A traditional companionway leads up to the spacious staterooms.





Accommodation

The six spacious cabins, made of traditional woodwork, are decorated in such a way that even without the bed settings, the ambience is serene and delightful. The Master and VIP cabins feature Queen-size beds. There are two standard Double cabins with sofa (one of which can be joined by a division with bow Twin cabin), and two Twin cabins, all fully air-conditioned, with en-suite facilities and hi-fi audio.



The Sir Winston Churchill

SPECIFICATIONS

L.O.A: 134.5' (41m)

Beam: 24.9' (7.6 m)

Draught: 16' (4.98 m)

Sail area: 968.5 sq.yd. (810 sq.m)

Engines: 2 x IVECO 360 bhp

Cruising speed: 12 Knots

Generators: 2 x 60 kW

Electricity: 220 V a/c, 24 V d/c

Fuel consumption: 100 litre/hr

Fuel capacity: 10,000 litres

Water capacity: 36,000 litres

Construction: Steel

Built by: Richard Dunston (Hessle) Ltd

Designer: Camper & Nicholsons

ACCOMMODATION

12 guests in four Double and two Twin cabins,
all with ensuite facilities. Air-conditioned throughout.

Crew of 8/9 in separate quarters.

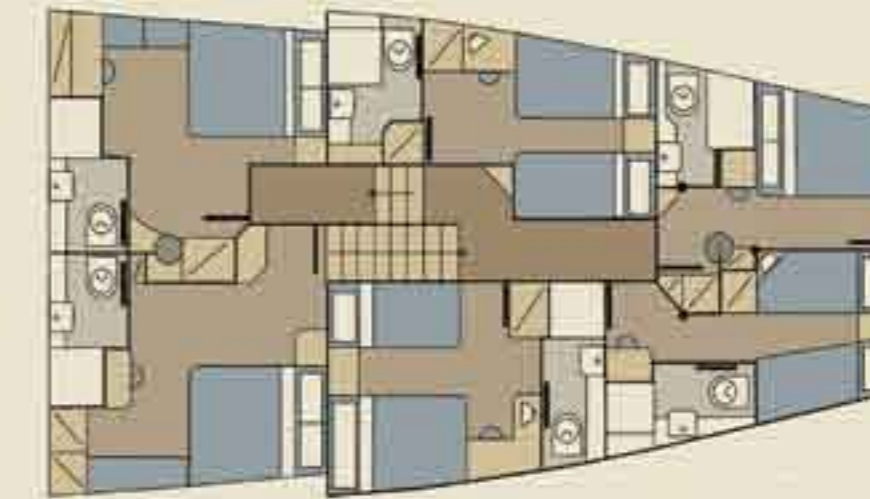
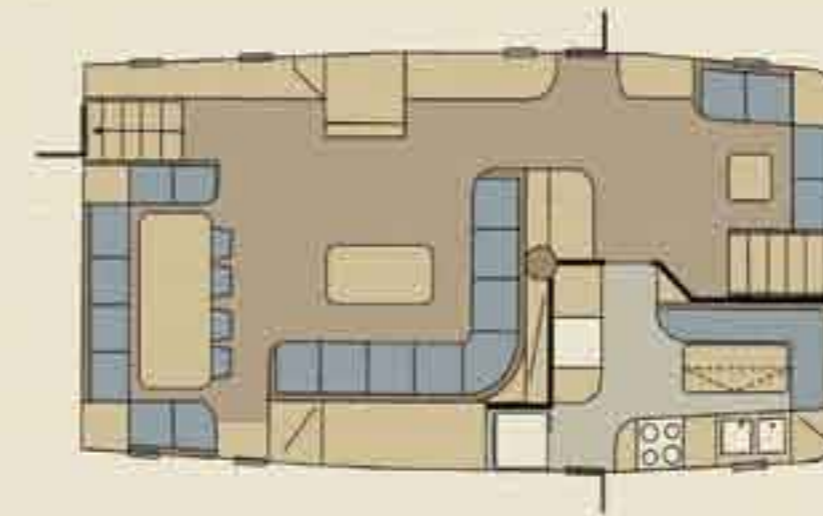
EQUIPMENT

Communications/Navigation, VHF, GPS,
Radar x 2 , Autopilot, EPIRB, GMDSS A2, IMARSAT C,
Sonar, Wind Instruments, Weather Fax, Plotter and Ice Maker.

Entertainment : Colour SAT TV/VCR/DVD
in salon. Audio throughout.

RECREATION

Orizon 5m RIB with 70 hp Tohatsu,
Waterskiing, Snorkelling, SCUBA diving,
Fishing and Windsurfing (on request).



Bridge

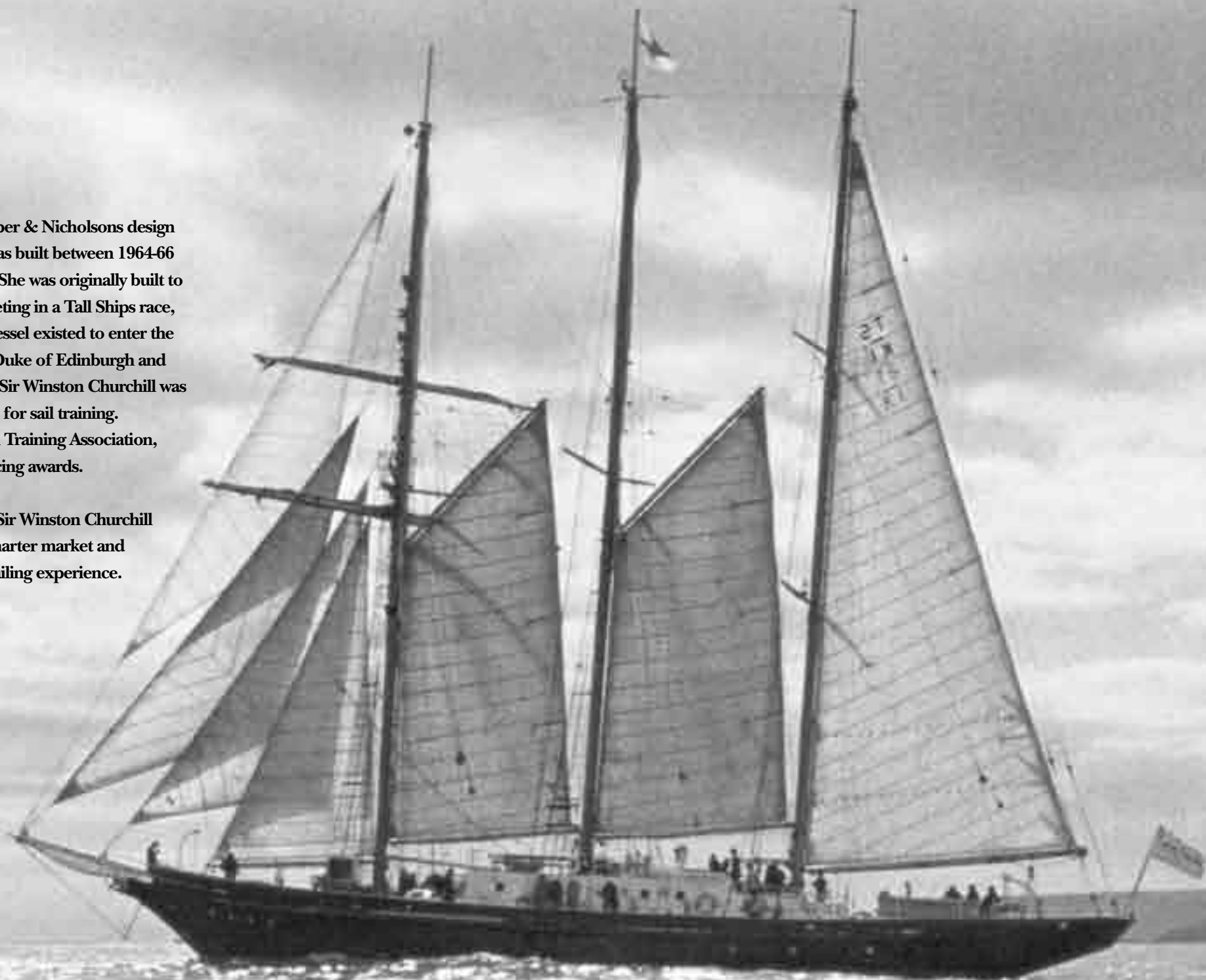
While the design, rigging and sails are those of an authentic traditional Tall Ship, the bridge is equipped with the most up-to-date satellite navigation and communication hardware. Two powerful Iveco engines mean a 12-knot cruising speed in any weather, while the skilled and experienced crew guarantee your safety and comfort at all times.



History

The Sir Winston Churchill, a Camper & Nicholsons design with truly gracious timeless lines, was built between 1964-66 by Richard Dunston (Hessle) Ltd. She was originally built to respond to the challenge of competing in a Tall Ships race, at a time where no other English vessel existed to enter the race. Under the patronage of the Duke of Edinburgh and with funds of public support, The Sir Winston Churchill was launched in 1966 and initially used for sail training. Under the management of the Sail Training Association, she participated and won many racing awards.

Now, entirely refitted in 2000, the Sir Winston Churchill makes her presence in the yacht charter market and ensures a genuine unforgettable sailing experience.





*The
Sir Winston Churchill*